

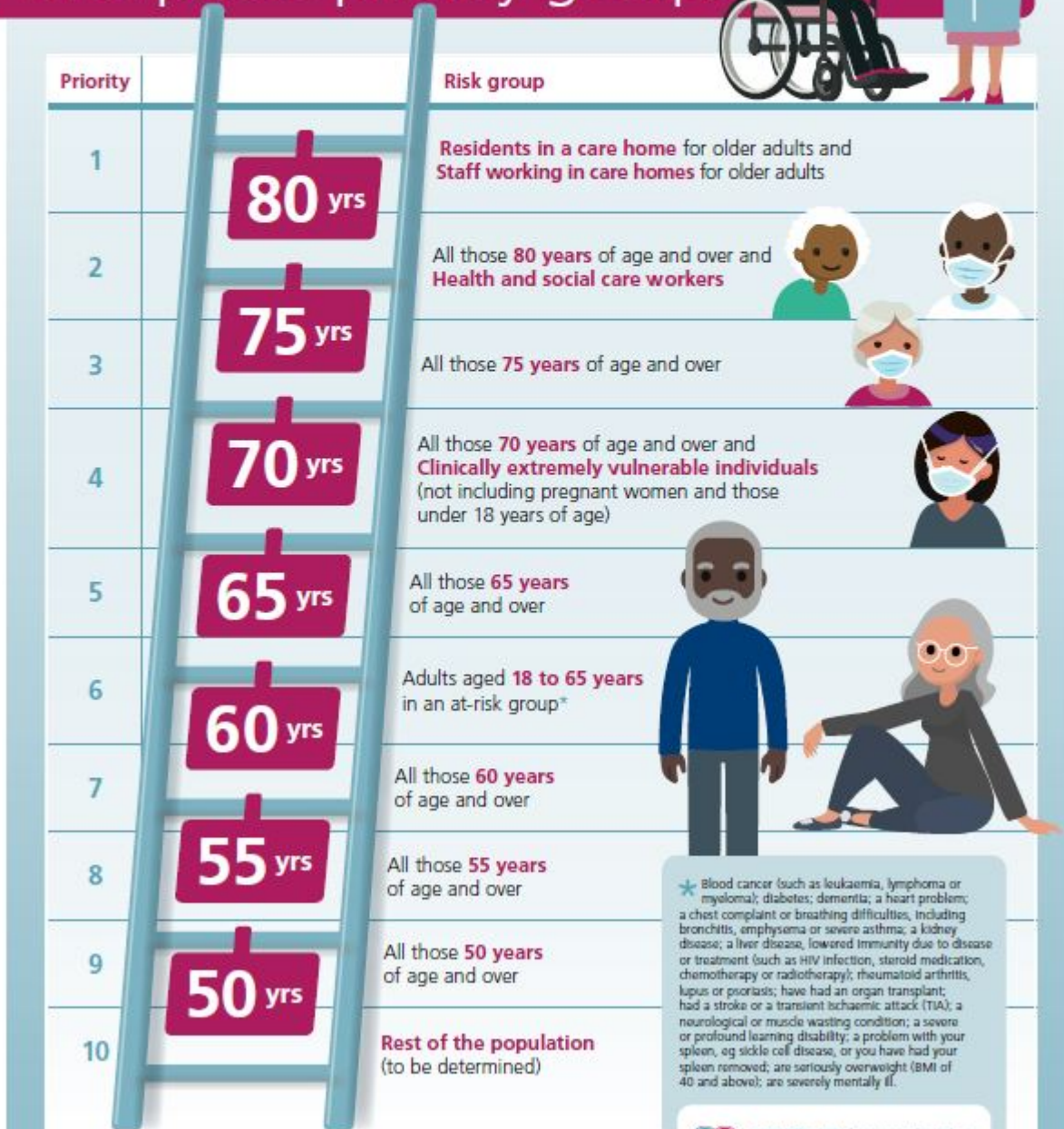
Vaccine priority poster

The Government has scheduled the vaccine in ten tiers or priority. You will be contacted by the NHS to arrange your jab/s. Go to [nhs/CovidVaccine](https://www.nhs.uk/covidvaccine).



COVID-19 vaccination

First phase priority groups



* Blood cancer (such as leukaemia, lymphoma or myeloma); diabetes; dementia; a heart problem; a chest complaint or breathing difficulties, including bronchitis, emphysema or severe asthma; a kidney disease; a liver disease, lowered immunity due to disease or treatment (such as HIV infection, steroid medication, chemotherapy or radiotherapy); rheumatoid arthritis, lupus or psoriasis; have had an organ transplant; had a stroke or a transient ischaemic attack (TIA); a neurological or muscle wasting condition; a severe or profound learning disability; a problem with your spleen, eg sickle cell disease, or you have had your spleen removed; are seriously overweight (BMI of 40 and above); are severely mentally ill.



© Crown copyright 2020. Public Health England gateway number 2020355. 01.12.2020

priority order for coronavirus vaccine

Related Articles

[Coronavirus and hand washing](#)

[Coronavirus and safeguarding vulnerable people](#)